

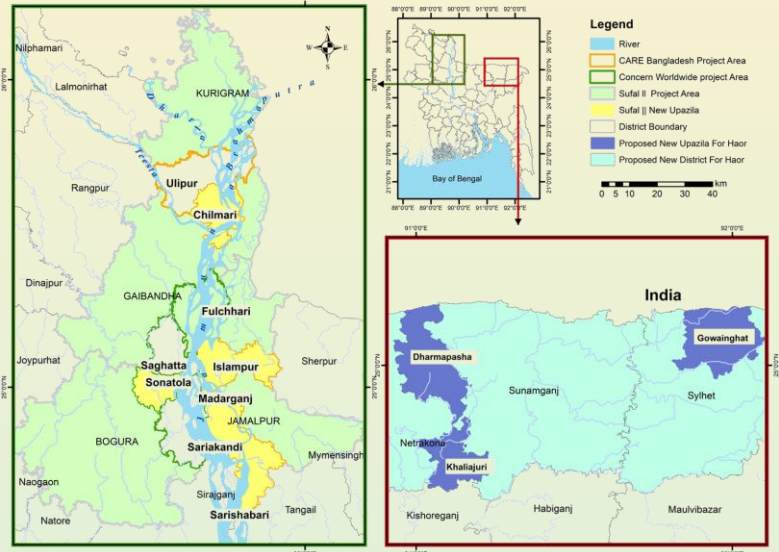
Scaling up Forecast-based Action and Learning in Bangladesh (SUFAL II)

Scaling-up Forecast-based Action and Learning in Bangladesh (SUFAL II) is a consortium project that aims to build the capacity of institutions and communities to implement Forecast-based Action (FbA) to reduce the loss of life, assets and livelihoods on an anticipated hazard in monsoon flood-prone north-western *Char* areas, and in flash-flood and lightning prone north-eastern *Haor* areas. SUFAL II focuses on strengthening FbA by developing a community-based approach and looking into existing systems to link with financing for early action.

The project addresses the three pillars of anticipatory action by:

- 1) strengthening impact-based forecast through tailored, sector-specific, timely and accurate data;
- 2) developing early actions in consultation with communities, local government and other institutions;
- 3) supporting community and institutions in decision-making to act ahead of monsoon flood, flashflood and lightning by utilizing suitable finance and resources with available lead time.

Project Areas Of SuFal II



Expected Outcome



Enhanced Early Warning System with tailored forecast information are available and used by the stakeholders and community



Institutions and community are able to take timely, appropriate, inclusive and sector specific early actions to respond to multi-hazards



Early Action Protocols (EAP) and financing mechanisms are developed through evidence generation and advocacy



Donor

European Union Civil Protection and Humanitarian Aid Operations (ECHO)



Partners

CARE Deutschland e.V. & CARE Bangladesh
 Concern Worldwide
 Regional Integrated Multi-Hazard Early Warning System for Africa and Asia (RIMES)
 Eco- Social Development Organization (ESDO)
 Friends In Village Development Bangladesh (FIVDB)
 Peoples Oriented Program Implementation (POPI)
 SKS Foundation



Duration

July 2021 to September 2024



Funded by European Union Humanitarian Aid